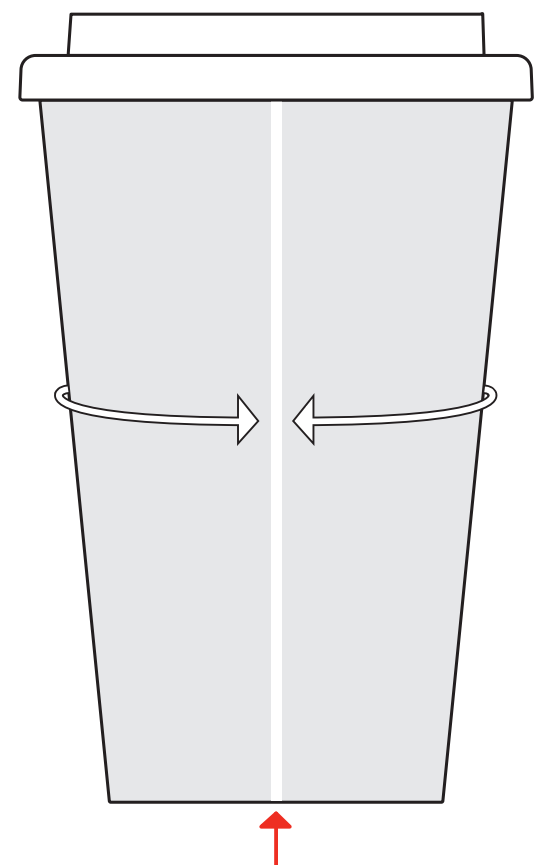
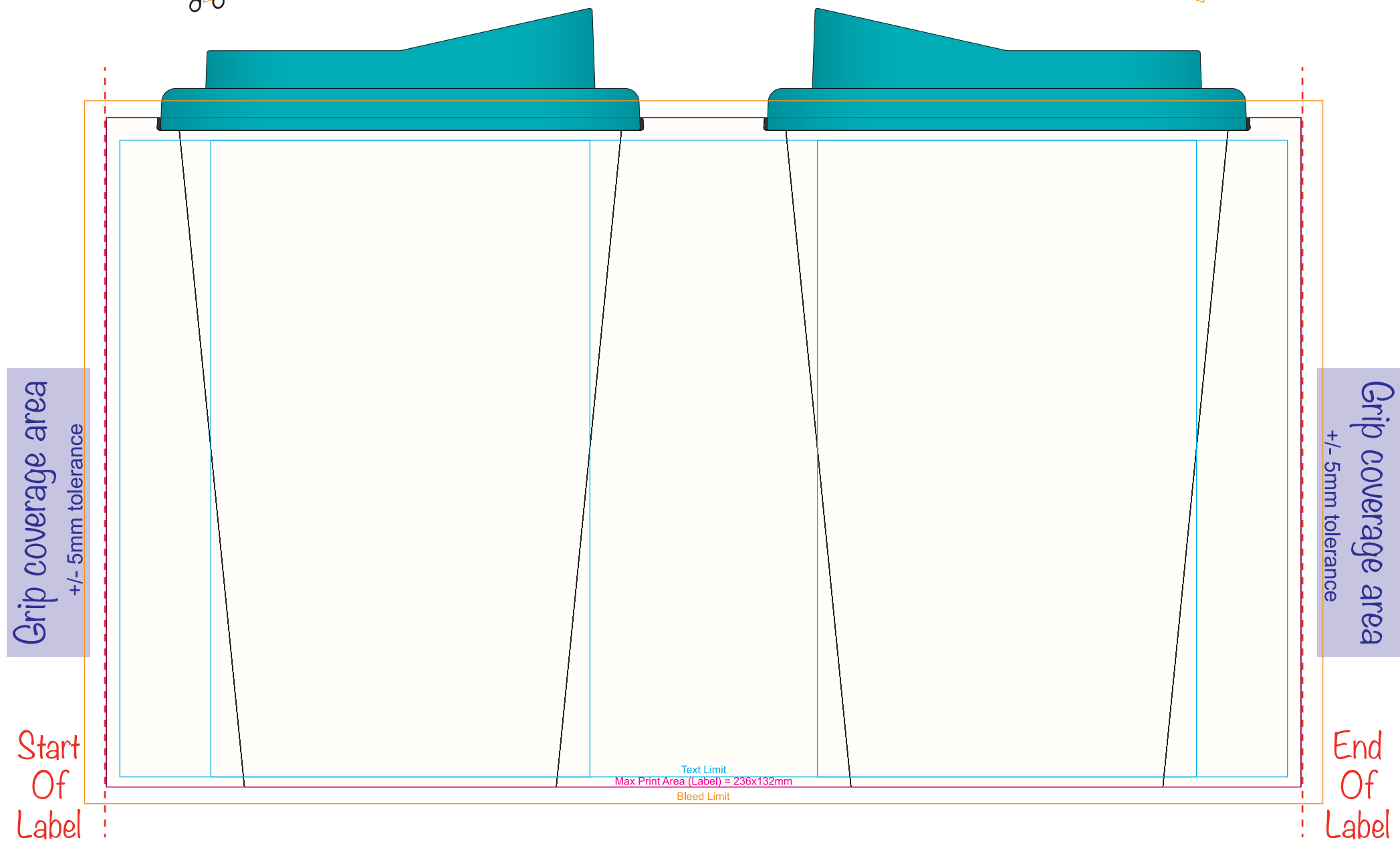


To Step and Repeat Mug Artwork
Onto Curved Guides =
-174mm



There will be a
2mm (approx.) white
gap between where the
label finishes and begins.

* Any shapes in the bottom quarter of the mug may appear slightly distorted on the finished item due to the design of the mug

* The drinking spout of the lid may be in different positions in relation to your artwork across your mug order.

Print size: _____ mm x _____ mm

Color: Process